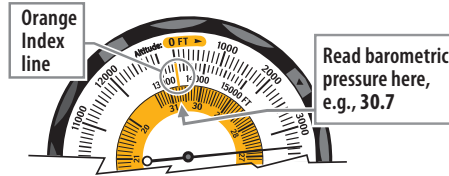


How to read barometric pressure on your SUN altimeter/barometer:

First, look at the face of your altimeter gauge. Does your altimeter measure in **feet** (0 to 15,000) or in **meters** (0 to 5000)?

- A. If in **meters**, please refer to **Section II** below.
- B. If in **feet**, we must first determine whether you have a **NEWER** or **OLDER** model (this applies to “feet” version only):
 - 1. If you have a **NEWER** model, it will have an **orange Index line**, located just under the “0 FT” printed on the dial (see diagram below).
 - 2. If you have an **OLDER** model, it will **NOT** have the orange Index line shown diagram below.



- C. If you have **NEWER** model (feet version), please refer to **Section I** below.
If you have an **OLDER** model (feet version), please refer to **Section II** below.

Section I: If you have NEWER “feet” model (with Index mark):

Note that you do **NOT** use the black indicator needle to read barometric pressure. The black indicator needle is only used to read altitude. Use the orange Index line to read barometric pressure.

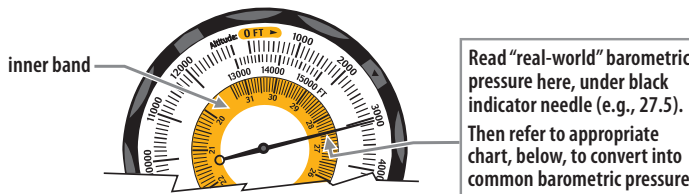
With your altitude needle set to the correct altitude, simply read directly down the orange Index line to the corresponding barometric pressure reading. That is the current barometric pressure.

Note: To get correct barometric pressure reading, you must first have outer dial of your altimeter set to correct altitude.

Also please note: Barometric pressure is factory-set, so typically will not need adjusting. However, if you wish to fine-tune the barometric pressure reading, you may, with a screwdriver, slightly turn black screw in center of back of altimeter.

Section II: If you have OLDER “feet” model (without Index mark) or if you have any “meters” model:

Read barometric pressure reading that appears under the black indicator needle, along the **inner band** of markings. (See diagram below.)



This reading will provide real-world barometric pressure, but not the barometric pressure typically provided by weather reports, weather channels, etc. To convert this real-world barometric pressure to sea-level compensated barometric pressure, please refer to the chart below on the left (for “meters”) or the right (for “feet.”) Follow instructions printed below the chart for converting to common “weather report barometric pressure:

“Feet” version chart (Do not use if your altimeter has an orange Index mark)

Barometric Conversion Chart	
	Barometric Pressure reading on your dial (inches of Mercury or in. Hg)
A	1000 27.5 27.7 27.9 28.1 28.3 38.5 28.6 28.8 29.0 29.2 29.4 29.6
L	2000 26.5 26.6 26.8 27.0 27.2 27.4 27.6 27.8 28.0 28.2 28.4 28.6
T	3000 25.5 25.7 25.8 26.0 26.2 26.4 26.6 26.7 26.9 27.1 27.3 27.5
I	4000 24.5 24.7 24.9 25.1 25.3 25.4 25.6 25.8 26.0 26.2 26.3 26.5
T	5000 23.6 23.7 23.9 24.1 24.4 24.4 24.6 24.8 25.0 25.1 25.3 25.4
U	6000 22.8 22.9 23.1 23.3 23.4 23.6 23.7 23.9 24.1 24.2 24.2 24.5
D	7000 21.9 22.0 22.2 22.4 22.5 22.7 22.8 23.0 23.2 23.3 23.5 23.6
E	8000 21.1 21.3 21.4 21.5 21.7 21.8 22.0 22.1 22.2 22.4 22.6 22.8
S	9000 20.3 20.5 20.6 20.7 20.9 21.0 21.1 21.2 21.4 21.5 21.7 21.8
i	10000 19.5 19.7 19.8 19.9 20.0 20.2 20.4 20.5 20.6 20.7 20.9 21.0
n	11000 18.8 19.0 19.1 19.2 19.4 19.5 19.6 19.7 19.8 20.0 20.1 20.3
F	12000 18.0 18.2 18.3 18.4 18.6 18.7 18.9 19.0 19.1 19.2 19.4 19.5
E	13000 17.5 17.6 17.7 17.8 17.9 18.0 18.1 18.2 18.3 18.5 18.6 18.8
E	14000 ----- 17.0 17.1 17.2 17.4 17.5 17.6 17.7 17.8 18.0 18.1
T	15000 ----- ----- ----- ----- 17.0 17.1 17.3 17.4
	28.6 28.8 29.0 29.2 29.4 29.6 29.8 30.0 30.2 30.4 30.6 30.8
	Common Barometric Pressure (as if at sea-level)

Note: Read this bottom row for BAROMETRIC PRESSURE as commonly reported.

“Meters” version chart

Barometric Conversion Chart	
	Barometric Pressure reading on your dial (hectoPascals or Millibars)
A	300 947 954 961 968 974 981 985 992 999 1006 1013 1019
L	600 912 916 923 930 937 944 951 957 964 971 978 985
T	900 878 884 888 894 901 908 915 918 926 933 940 946
I	1200 843 849 856 864 871 874 881 888 894 901 905 912
T	1500 812 816 822 829 833 839 846 853 861 864 871 874
U	1800 784 787 795 800 805 812 816 822 829 833 839 843
D	2100 754 757 764 771 774 781 784 791 798 800 809 812
E	2400 726 733 737 740 747 750 757 760 764 771 777 784
S	2700 698 705 709 712 719 722 726 729 737 740 747 750
i	3000 671 678 682 685 688 695 702 705 709 712 719 722
n	3300 647 653 657 660 667 671 676 678 682 688 692 698
F	3600 620 626 630 633 640 643 650 653 657 660 667 671
E	3900 602 606 609 613 616 620 623 626 630 636 640 647
E	4200 ----- 585 588 591 598 602 606 609 613 620 623
R	4500 ----- ----- ----- ----- ----- 585 595 598
	985 991 998 1005 1012 1018 1025 1032 1039 1045 1053 1060
	Common Barometric Pressure (as if at sea-level)

Note: Read this bottom row for BAROMETRIC PRESSURE as commonly reported.

Instructions for reading chart:

1. Find your current altitude along the left column. Make sure your altimeter is adjusted to this correct altitude.
2. Move left-to-right across that row until you come to the barometric pressure closest to what’s shown on your instrument.
3. Move down that column to the bottom row of numbers. This is your sea-level compensated barometric pressure, as commonly reported.